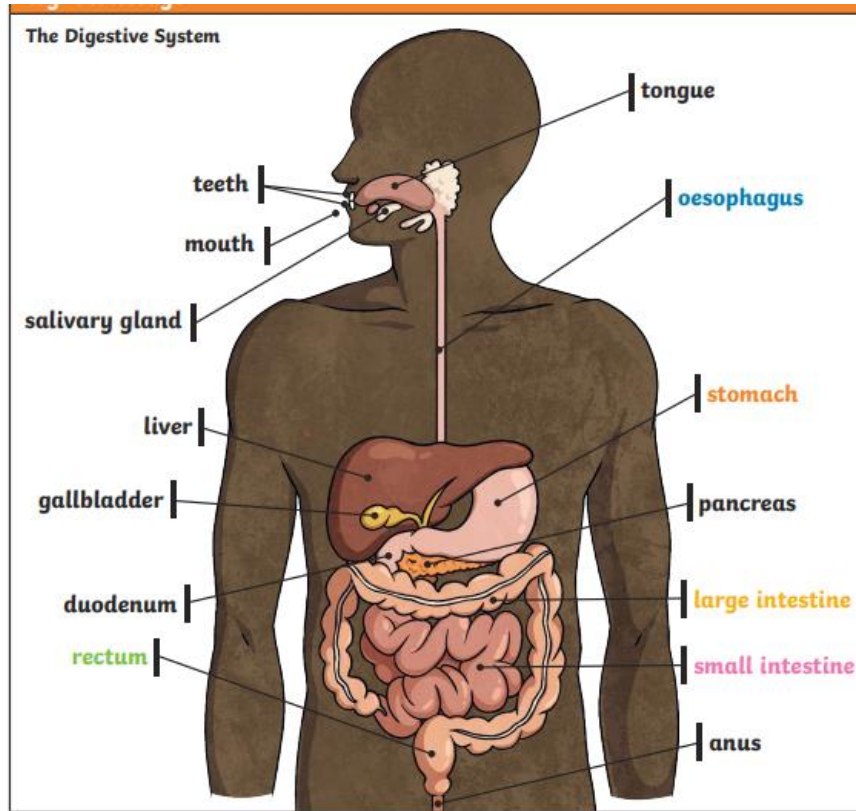


# ANIMALS INCL. HUMANS DIGESTION – WOODPECKER CLASS

Important themes we will learn about in this topic:

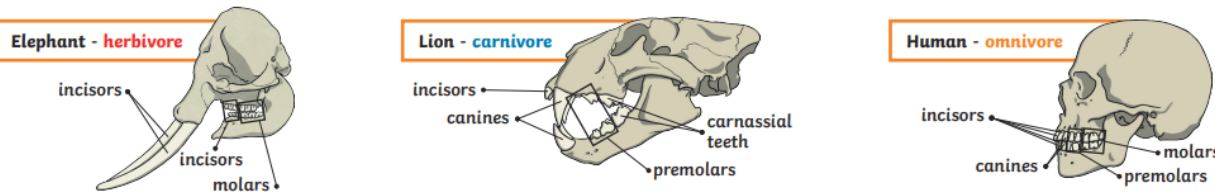
- The different parts and function of organs in the digestive system
- Different teeth for humans and animals
- Food chains and how they are constructed
- We will investigate tooth decay



## Key Vocabulary

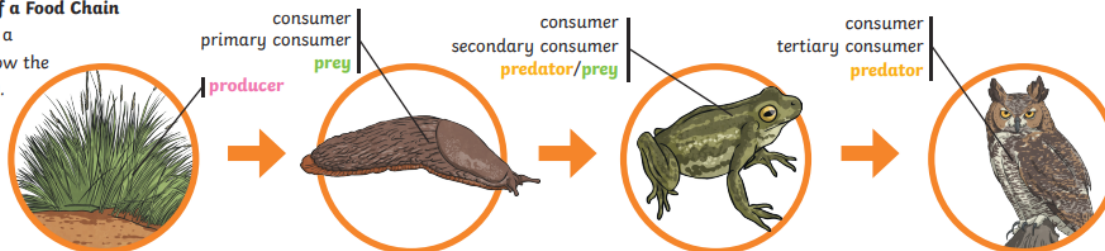
|                 |  |
|-----------------|--|
| digest          | Break down food so that it can be used by the body.  |
| oesophagus      | A muscular tube which moves food from the mouth to the stomach.  |
| stomach         | An organ in the digestive system where food is broken down with stomach acid and by being churned around.              |
| small intestine | Part of the intestine where nutrients are absorbed into the body.  |
| large intestine | Part of the intestine where water is absorbed from the remaining waste food. Stools are formed in the large intestine. |
| rectum          | Part of the digestive system where stools are stored before leaving the body through the anus.                         |
| incisor         | Front teeth that bite and cut.   |
| canine          | Teeth that tear and rip.   |
| molar           | Back teeth that grind.   |

The teeth of an animal are designed to eat different foods depending on the diet of the animal. Examples of a **herbivore**, a **carnivore** and an **omnivore** skull:



## An Example of a Food Chain

The arrows in a food chain show the flow of energy.



Links to previous learning:

- Amazing skeletons and muscles
- Marie Curie – x-rays and skeleton
- Extreme Survival - Animal adaptations