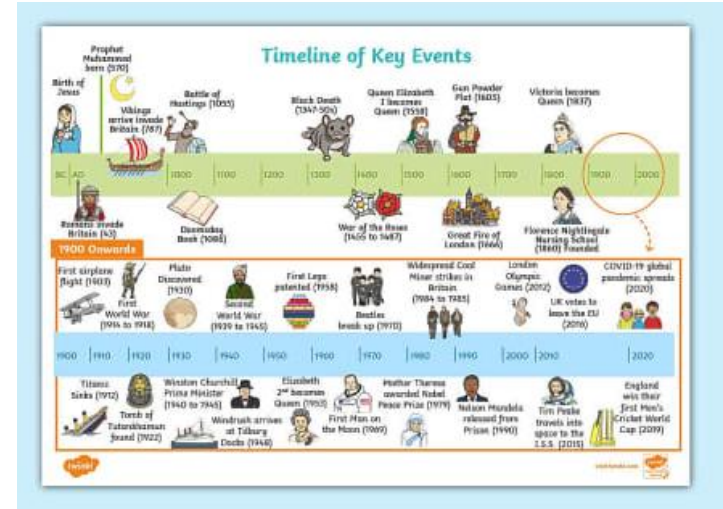
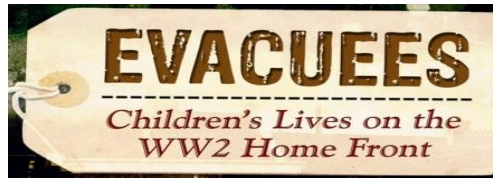
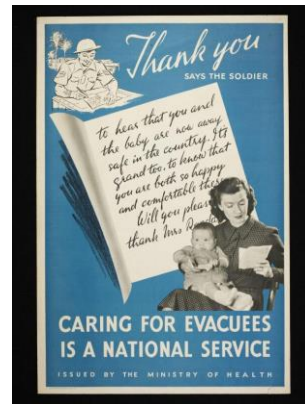
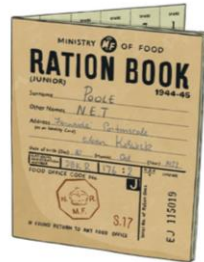


Key Vocabulary	
Evacuee	An evacuee is someone who has been sent away from a dangerous place to somewhere safe, especially during a war.
Home Front	The activities of the people in their home countries, which support the military during a war.
WW2	World War 2 took place between 1939 and 1945.
Gas Mask	A mask used to protect the face and lungs against harmful gases.
Air-raid Siren	A device that sounds an alarm to warn people when an air raid is expected.
Air-raid Shelter	A structure, often underground, designed to protect people during an air raid
Rationing	The system of limiting the amount of food, water, petrol, or other necessary items that people are allowed to have or buy when there is not enough of them.
Artefact	A man-made object, such as pieces of art or tools, that is of particular cultural, historical or archaeological interest.



WW2 Artefacts



Some children stayed in large manor houses.



Children were sent by train to the country.

