

Key Vocabulary	
Root	Roots take in water and nutrients from the soil and keep the plant in the ground.
Flower	The part of a plant that is often brightly coloured and grows at the end of the stem. It helps attract insects and birds.
Petal	Petals are the colourful part of the flower.
Stem	The thin, upright part that holds up the plant and carries water and nutrients from the roots to the leaves and flowers.
Leaf / leaves	The part of a tree or plant that are flat, thin and usually green.
Deciduous	A deciduous tree loses its leaves each year.
Evergreen	An evergreen tree keeps its green leaves all year round, even in the winter.
Temperature	How hot or cold it is. Plants need a suitable temperature to grow.
Mature	A mature plant is one that is fully grown and established.
Healthy	Healthy plants have firm leaves, well-formed flowers and fruit, and well-developed root systems. Plants need air, light, warmth, water and nutrients to be healthy.

What plants need to grow



Light



Gases from the air



Room to grow



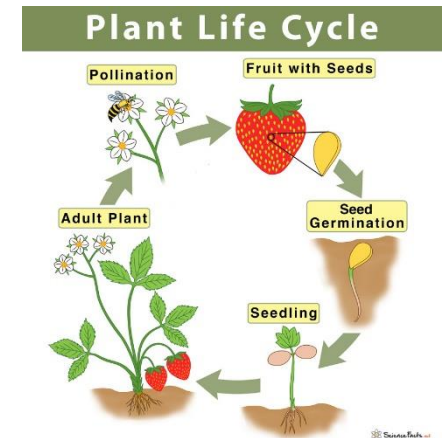
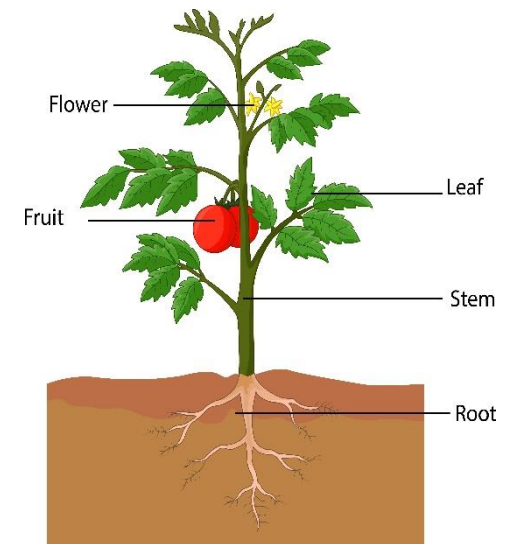
Nutrients



Water



Correct temperature



What Does a Plant Need to Grow?

Different plants vary in how much of these things they need. For example, cacti can survive in areas with little water, whereas water lilies need to live in water.

Link to previous learning: **Plants, Living Things and their Habitats**