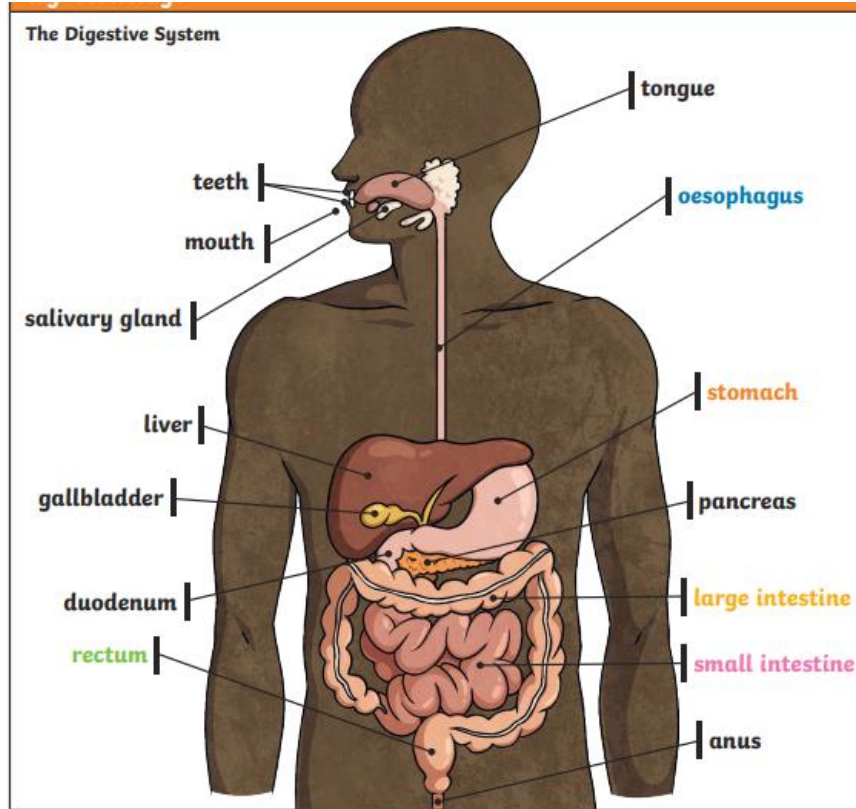


ANIMALS INCL. HUMANS DIGESTION – WOODPECKER CLASS

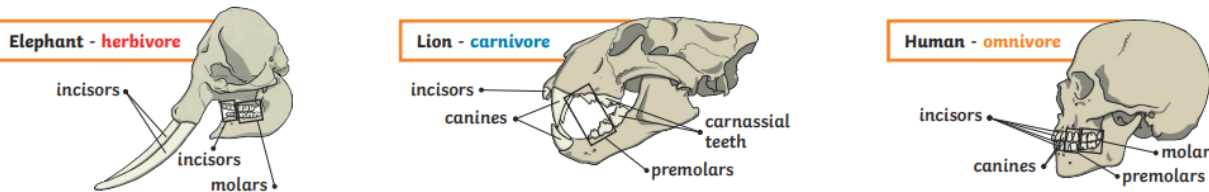
Important themes we will learn about in this topic:

- The different parts and function of organs in the digestive system
- Different teeth for humans and animals
- Food chains and how they are constructed
- We will investigate tooth decay



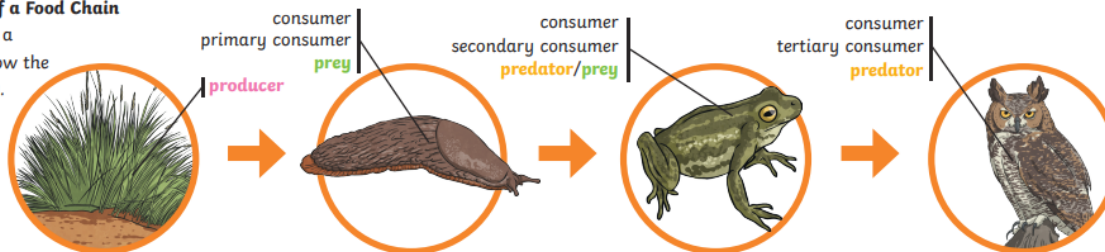
Key Vocabulary	
digest	Break down food so that it can be used by the body.
oesophagus	A muscular tube which moves food from the mouth to the stomach.
stomach	An organ in the digestive system where food is broken down with stomach acid and by being churned around.
small intestine	Part of the intestine where nutrients are absorbed into the body.
large intestine	Part of the intestine where water is absorbed from the remaining waste food. Stools are formed in the large intestine.
rectum	Part of the digestive system where stools are stored before leaving the body through the anus.
incisor	Front teeth that bite and cut.
canine	Teeth that tear and rip.
molar	Back teeth that grind.

The teeth of an animal are designed to eat different foods depending on the diet of the animal. Examples of a **herbivore**, a **carnivore** and an **omnivore** skull:



An Example of a Food Chain

The arrows in a food chain show the flow of energy.



Links to previous learning:

- Amazing skeletons and muscles
- Marie Curie – x-rays and skeleton
- Extreme Survival - Animal adaptations