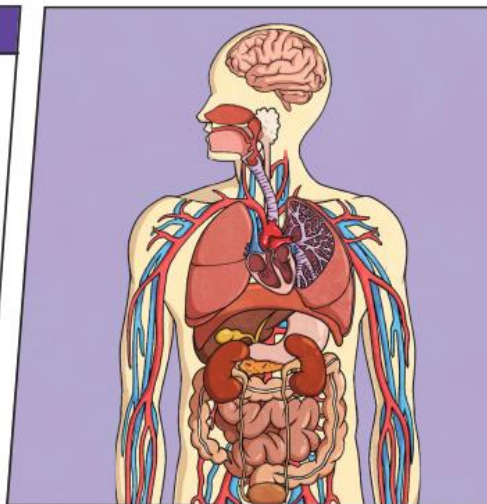


Key Vocabulary	
astrophysicist	An astrophysicist is a scientist who studies the universe beyond Earth.
black holes	Black holes are areas of space where gravity is so strong that matter and radiation (including light) are pulled in and can't escape.
classification	This is where plants or animals are placed into groups according to their similarities.
invertebrates	Animals without a backbone.
cholesterol	Cholesterol is a fatty substance that travels in our blood
evolution	Evolution is the process of a living thing's characteristics changing over a long period of time to increase their chances of surviving and reproducing.
hominins	A group of primates which includes humans and recent ancestors of humans.

The Effects of Cholesterol

Cholesterol has a role in keeping our bodies healthy. However, Marie Maynard Daly's work demonstrated that high levels of cholesterol can lead to clogged arteries.

One way we can lower cholesterol levels is by eating less saturated fat.



Evidence from Fossils

The fossilised footprints that Leakey found in Tanzania were extremely important. They have been dated to 3.7 million years ago and show a link between the species that made the prints and their ancestors, who would have walked on all fours. Leakey's find proved that changes were occurring over time, thus proving human **evolution**.

- Important people and places:
- Stephen Hawking
 - Libbie Hyman
 - Marie Maynard Daly
 - Alexander Fleming
 - Mary Leakey
 - Dr Daniel Hale Williams
 - Steve Jobs

How Penicillin Was Discovered

Before going away on holiday, Alexander Fleming had not cleaned up his recent experiments with bacteria. On his return, he noticed that mould had grown in one of the Petri dishes. The colonies of bacteria around the mould had been destroyed, whereas the bacteria in other Petri dishes were still alive.

He originally called his discovery 'mould juice', but in March 1929 he officially named the substance 'penicillin', now a widely used antibiotic.

- Links to previous learning:
- Evolution and Inheritance
 - Plants and Animals
 - Space