



In addition to the maths tasks we always give the children a reasoning activity (Twist It) and a problem solving (Solve It) each day. Please have a go if you have time.

Year 1 Monday

Twist It




The time is 3 o'clock.



Jay

Can you spot Jay's mistake?

Solve It



Holly


It is 11 o'clock so both hands should be pointing at 11

Is Holly correct?
Explain your reasoning.

Year 1 Tuesday

Twist It

Sam is showing half past 4.
What mistake has he made?
Draw the correct time.




Solve It

Three hours later than half past 10
is.....


Five hours before half past 2 is

Year 1 Wednesday

Twist It



The time is 6 past 1



Amy

Can you spot Amy's mistake?


Solve It

Read the instructions and draw the hands on the clock.

The minute hand is pointing at the six.

The hour hand is half way between 10 and 11.

What time is it?



Year 1 Thursday

Twist It

Ask an adult to time you to do 3 different activities, e.g.

Write your name 5 times

Go up and down the stairs 10 times.

Build a tower of 10 bricks.

Write 3 sentences about each activity using the words *faster* and *slower*.

Solve It

Joe is having a party.

Five of his friends are coming.

Use the clues to work out when his friends arrived.

Sam arrived later than Ben and Lily.

Kit arrived later than Sam but earlier than Pippa.

Lily arrived the earliest.

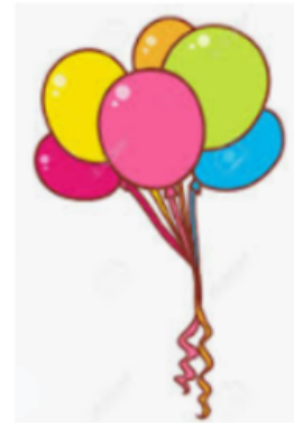
1st -

2nd -

3rd -

4th -

5th -



Year 1 Friday

No Twists and Solves due to the Time Challenge.