



Get out and get detecting!
How many of these are insects?



Earwig



Woodlouse



Grasshopper



Shieldbug



Caterpillar



Ant



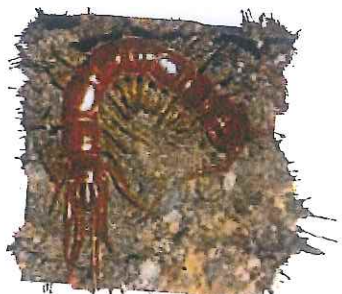
Harvestman



Snail



Stag beetle



Centipede



Insects have 6 legs and are invertebrates, which means they have no backbone.

Feel free to copy and share this for personal and educational use –
and don't forget there are loads more brilliant activities to download on our website!

woodlandtrust.org.uk/naturedetectives | 0330 333 5301 | naturedetectives@woodlandtrust.org.uk

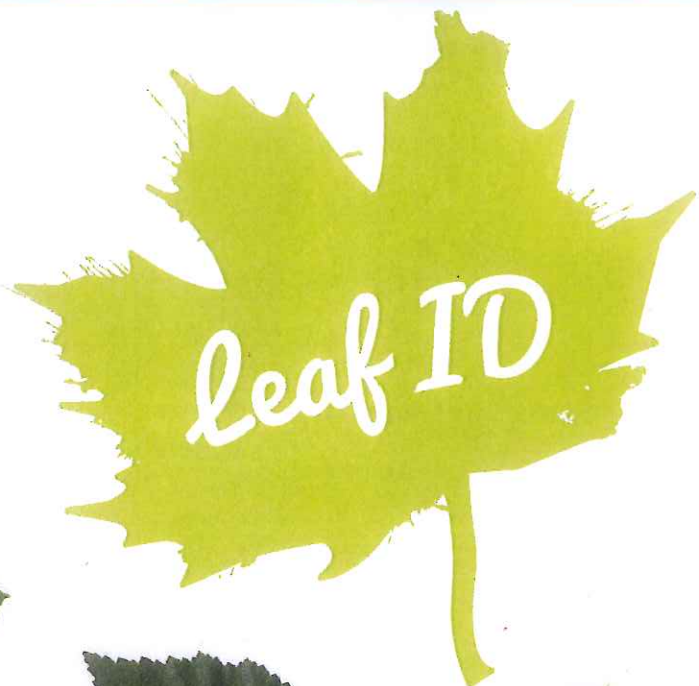
f Search for 'nature detectives' | t #NatureDetectives

© Made in 2015 by the Woodland Trust (registered charity nos 294344 and SC038885)



Be a super spotter!

How many trees can you identify?



Alder



Beech



Oak



Sycamore



Birch



Holly



Elder



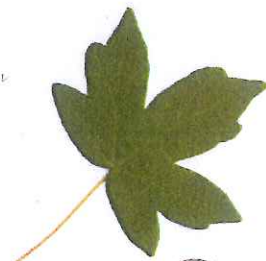
Ash



Horse Chestnut



Rowan



Field Maple



Hawthorn



Hazel



Found any other leaves? Do you know which trees they're from?

Feel free to copy and share this for personal and educational use -
and don't forget there are loads more brilliant activities to download on our website!

woodlandtrust.org.uk/naturedetectives | 0330 333 5301 | naturedetectives@woodlandtrust.org.uk

f Search for 'nature detectives' | t #NatureDetectives

© Made in 2015 by the Woodland Trust (registered charity nos 294344 and SC038885)