

Eatwell Guide

Check the label on packaged foods

Each serving (150g) contains

Energy 1046kJ 250kcal	Fat 3.0g	Saturates 1.3g	Sugars 34g	Salt 0.9g
	LOW	LOW	HIGH	MED
13%	4%	7%	38%	15%

of an adult's reference intake

Typical values (as sold) per 100g: 697kJ/ 167kcal

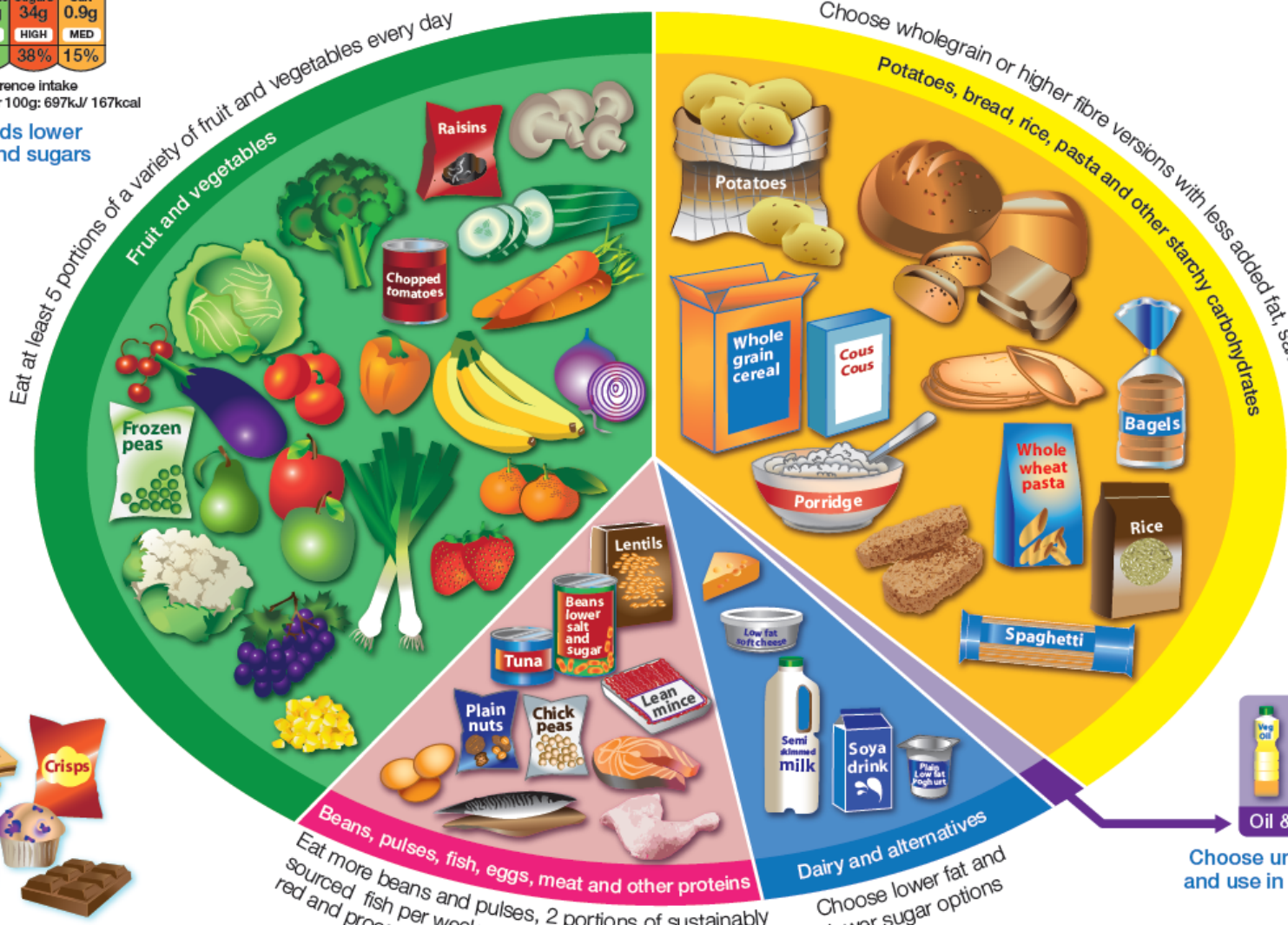
Choose foods lower in fat, salt and sugars

Use the Eatwell Guide to help you get a balance of healthier and more sustainable food. It shows how much of what you eat overall should come from each food group.



Water, lower fat milk, sugar-free drinks including tea and coffee all count.

Limit fruit juice and/or smoothies to a total of 150ml a day.



Eat at least 5 portions of a variety of fruit and vegetables every day

Choose wholegrain or higher fibre versions with less added fat, salt and sugar

Potatoes, bread, rice, pasta and other starchy carbohydrates

Dairy and alternatives
Choose lower fat and lower sugar options

Beans, pulses, fish, eggs, meat and other proteins
Eat more beans and pulses, 2 portions of sustainably sourced fish per week, one of which is oily. Eat less red and processed meat

Choose unsaturated oils and use in small amounts



Eat less often and in small amounts

Per day 2000kcal 2500kcal = ALL FOOD + ALL DRINKS